

Tuesday 11/7/17

Warm-Up

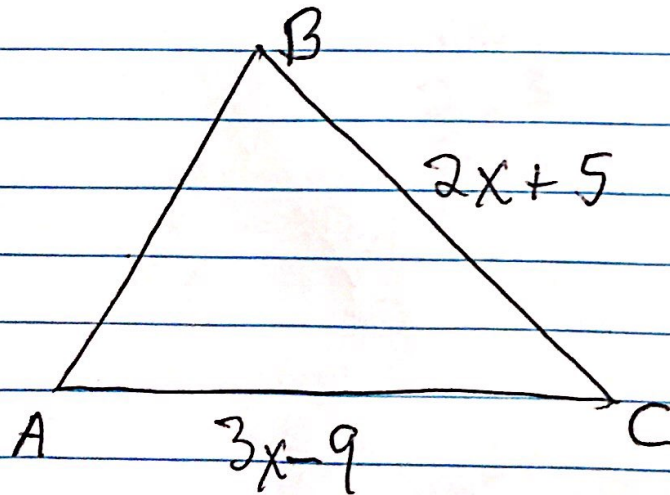
① solve for x
 $5 = 20x$

② solve for m
 $E = MC^2$

7 minutes

③ Find the midpoint of AB
 $A(3, 5)$ $B(-4, 2)$

④ Find the length of side AB
given the perimeter of $\triangle ABC$
is $8x - 12$



Mastery Connect Assignment (6 problems)

slope
distance
midpoint

Standards
G-GPE.6
G-GPE.7
F-IF.6

20 minutes

Standards S-ID.6a, b, c

Lesson - Linear Regression

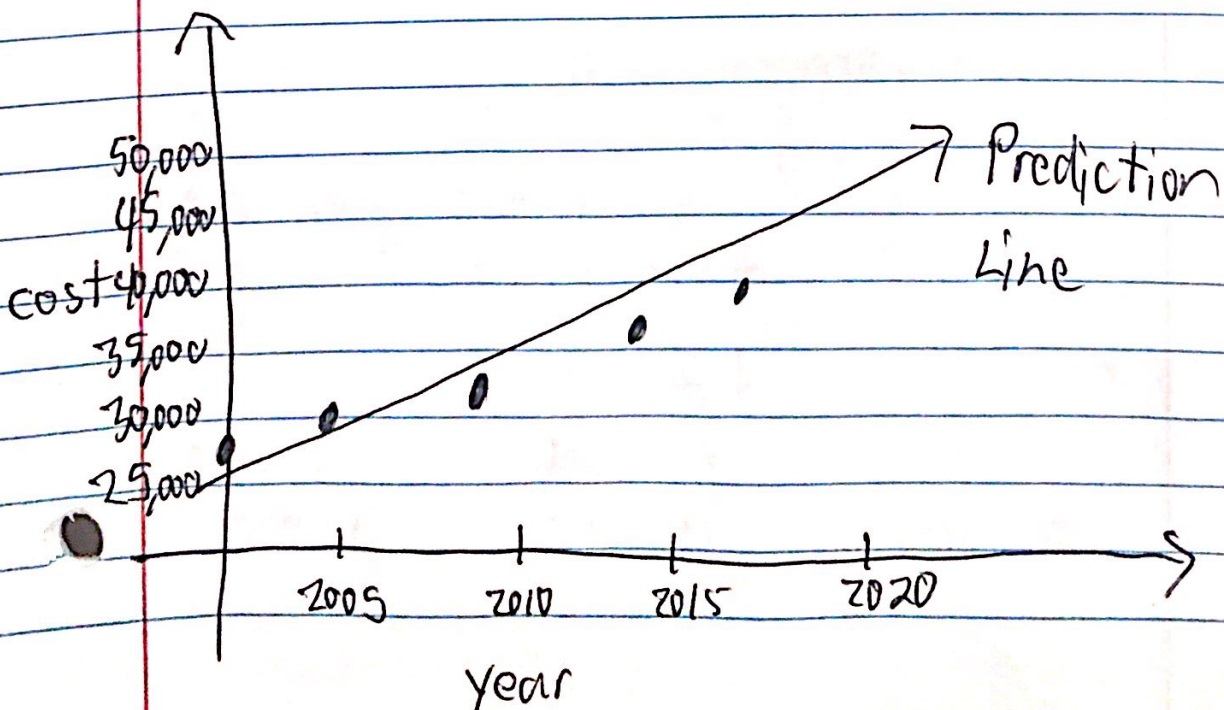
Line of Best Fit to make predictions
Calculator

Class Discussion - College Tuition
Movie Ticket Prices

Virginia Tech

Year	Tuition	Predict cost when you get there
2000	28,000	
2005	29,500	
2009	31,000	2021
2014	36,000	2022
2017	39,340	2023
		2024

Total



Finding Equation of Prediction Line

Calculator Instructions

- Clear memory

2^{nd} + 7 1 2 Enter

- To put data in calculator

$Stat$ $Edit$ L_1 L_2
x-values y values

- To get equation

$Stat$ $Calc$ 4 $Enter$ 5 times

$y = ax + b$ is $y = mx + b$

- To copy and paste in $y =$

$y =$ $Vars$ 5 EQ $Reg EQ$

- Look at table

2^{nd} $Graph$ go to prediction #

- To start table at prediction x

2nd Window Tab Start Prediction x

Go Back to table to view values

- Do another real life example or talk about the importance of Good Grades to get money for scholarships

- Motivation - Colleges look at Math 1 EOC Scores
 - Scholarship committees look at Math 1 EOC Scores and Math 1 Grades
 - College too expensive to waste money

HW - Create a scenario in which you can use linear regression.
At least 5 data points.

Ideas - weather temp
- movie tickets
- stock prices

Wed 11/8

warm-up ① $(x^2-3)(x^2+2x)$

- Emphasize double distributive property and expanding exponents. This will help with exponent rules and factoring later

$$x^2(x^2+2x) - 3(x^2+2x)$$

$$xx(xx+2x) - 3(xx+2x)$$

7 min

$$xxxx + 2xxx - 3xx - 6x$$

$$x^4 + 2x^3 - 3x^2 - 6x$$

② $(xy^3 + x^2)(5x^2 + 3)$

③ $(2x-5)(x+3)$

Partner Mastery Connect Assignment

Systems of Equations + Inequalities

Standard -

A-REI.6

1-13

40 min

A-REI.10

~~#11~~ #11 Reads $x + y < 2$
 $y \leq 2$

#12 Reads $2x - y > 4$
 $x \leq 4$

#13 Reads $3x - 2y \leq 6$
 $x - 1 > 0$

Mastery Connect Literal Equations
(Remaining Time)

standard - A-CED.4

- Show youtube video in between to break up assignments

- Literal Equations (Alone/No Partner)

Thurs 11/9

Warm-up
- Expand
the exponents

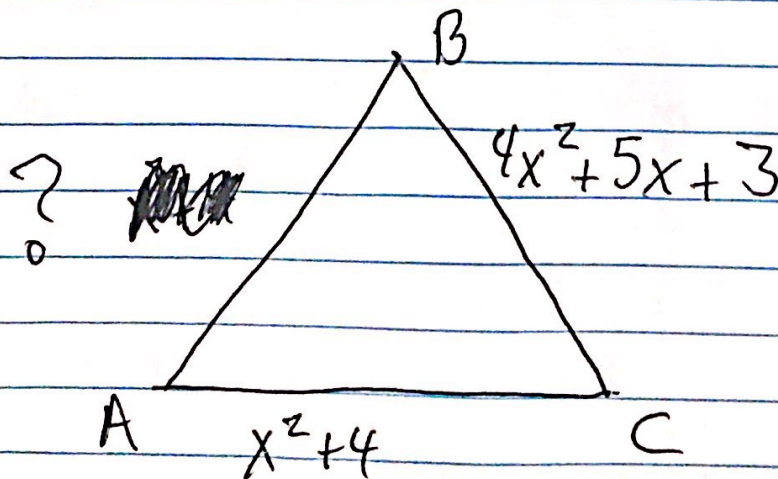
$$\textcircled{1} \frac{x^4 y^3}{x^2 y^2} = \frac{\text{XXXXYYY}}{\text{XXYY}} = X^2 Y$$

Try to get them
to create the
division property
of exponents

$$\textcircled{2} \frac{4x^3 y^2}{10xy}$$

$$\textcircled{3} \frac{2a^4 b^3}{12ac}$$

④ Find AB given the
perimeter of $\triangle ABC$
is $-2x^2 + 4x - 6$



Poster Stations - Pre determined groups of 4

- white boards

- markers

- erasers

10 min per station

Board 1

5- Systems

Board 2

5- Literal Equations

Board 3

5- Multistep Equations/Fractions

Board 4

2- Graphing

3 pts - distance, perimeter of triangle

Station 7

Computer problems

Board 5

4 Linear Regression

Board 6

5 Expanding Double distribute combine like terms divide exponents