

Station 1

$$\textcircled{1} \quad 2(x+6) + 5(x-3)$$

$$\textcircled{2} \quad -3(5x-4) + 4(x+2) - 3x$$

$$\textcircled{3} \quad 3y^2 + 4y - y^2 - 6y + 8 - 12y^2$$

$$\textcircled{4} \quad -3(x^2+5) - 5(x^2-2) + x^2 - 7$$

$$\textcircled{5} \quad 11x - 3y + 8x^2 + 2$$

Station 2

① Solve for y : $2x - 3y = 5$

② Solve for l : $P = 2l + 2w$

③ Solve for B_2 : $A = \frac{h}{2}(B_1 + B_2)$

④ Solve for h : $A = \frac{h}{2}(B_1 + B_2)$

⑤ Solve for r : $A = \pi r^2$

Station 3

A (2,5)

B (-4,-2)

C (1,-3)

slope AB

slope BC

slope AC

Perimeter $\triangle ABC$

A (4,5)

B (4,-2)

C (0,0)

slope AB

slope BC

slope AC

Perimeter $\triangle ABC$

Station 4

Solve for x

$$\textcircled{1} \quad 2x + 3 = -7x - 5$$

$$\textcircled{2} \quad \frac{1}{3}x + \frac{2}{5} = \frac{3}{4}$$

$$\textcircled{3} \quad 2(x+5) + 4(x+2) = 12$$

$$\textcircled{4} \quad -x - 3 = 5$$

$$\textcircled{5} \quad \frac{x}{2} + \frac{1}{3} = \frac{-3x}{5} + \frac{1}{2}$$

Station 5

Solve the system

$$\textcircled{1} \begin{cases} y = 6x - 11 \\ -2x - 3y = -7 \end{cases}$$

$$\textcircled{2} \begin{cases} 2x - 3y = -1 \\ y = x - 1 \end{cases}$$

$$\textcircled{3} \begin{cases} y = -2 \\ 4x - 3y = 18 \end{cases}$$

$$\textcircled{4} \begin{cases} -5x + y = -3 \\ 3x - 8y = 24 \end{cases}$$

$$\textcircled{5} \begin{cases} y = -3x + 5 \\ 5x - 4y = -3 \end{cases}$$

Station 6

Find the Best Fit Linear Equation

$$y = mx + b$$

①

| x | y |
|----|---|
| 2 | 4 |
| 5 | 8 |
| 7 | 4 |
| 10 | 2 |

②

| x | y |
|----|----|
| -3 | 2 |
| -2 | 6 |
| 1 | 9 |
| 4 | 15 |

③

| x | y |
|---|----|
| 1 | 7 |
| 2 | 12 |
| 3 | 17 |
| 4 | 22 |

④

| x | 0 | 8 | 9 | 12 |
|---|---|----|----|----|
| y | 3 | 10 | 11 | 14 |

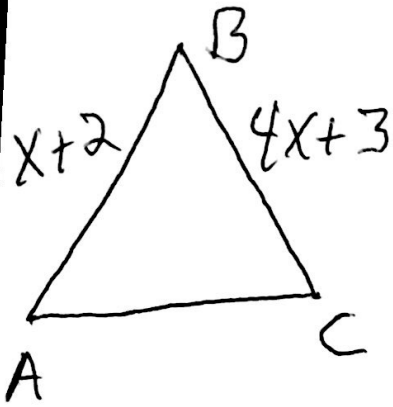
⑤

| x | 1 | 3 | 6 | 10 |
|------|---|---|----|----|
| f(x) | 1 | 5 | -2 | 11 |

Station 7

① Find AC

Perimeter $7x+10$



a.) $3x+2$

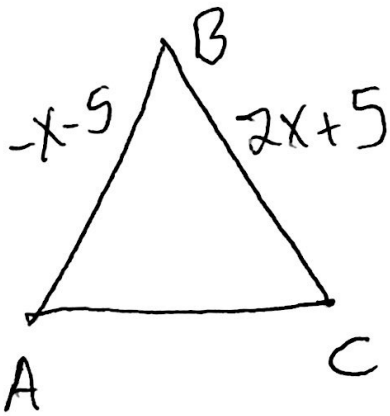
b.) $x-4$

c.) $5x+5$

d.) $2x+5$

② Find AC

Perimeter $8x-6$



a.) $5x$

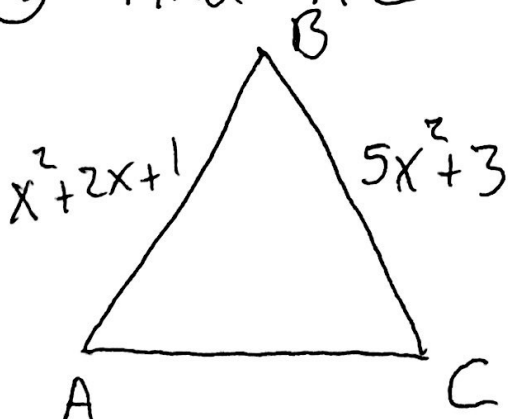
b.) $x-6$

c.) $7x-6$

d.) x

③ Find AC

Perimeter $10x^2+3x+4$



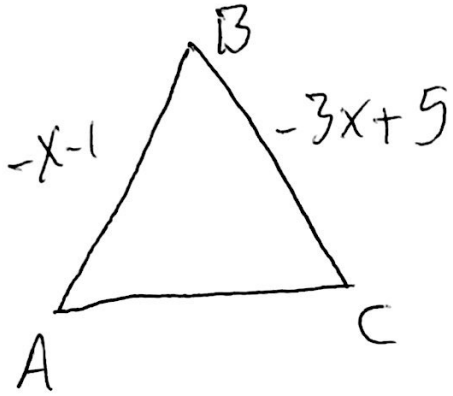
a.) $4x^2+x$

b.) $6x^2+2x+4$

c.) $2x-3$

d.) $4x^2+x+4$

④ Find AC



Perimeter $7x-6$

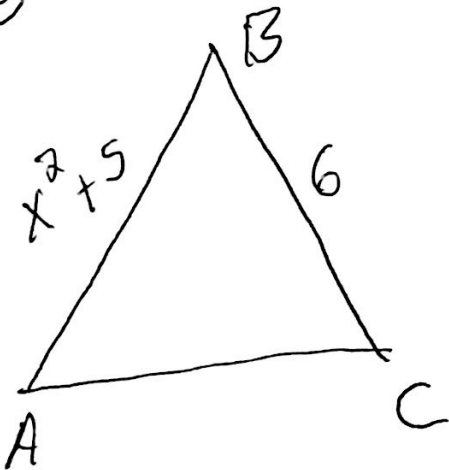
a.) $11x-10$

b.) $x-2$

c.) $x+8$

d.) $-4x-4$

⑤ Find AC



Perimeter $4x^2+20$

a.) x^2+11

b.) $5x^2+31$

c.) $5x^2+6$

d.) $3x^2+9$